

**Resort Policies:**

A \$500 Deposit is required to secure each week's reservation. A \$1,000 Deposit for house rentals.

A \$80-\$450 Deposit is required to secure daily reservations, depending on length of stay.

Check-In Time: **2:00 p.m.** or later  
**3:00 p.m.** or later for Saturday arrivals in July and August.

Check-Out Time: **10:00 a.m.**

Rates are subject to change without notice.

No reservation is definite unless confirmed.

Sorry, no pets or emotional support animals allowed.

Occupancy may not exceed registered/paid guests.

**All Rooms, Deck Areas, Picnic Table Areas and Pool Areas are NON-SMOKING**

We accept Cash, Visa, MasterCard, Discover, AmEx

**Cancellation Policy:**

Cancellations made fifteen (15) or more days prior to the date of arrival will incur a 10% charge of the total stay, tax excluded; minimum charge of \$50.00.

Cancellations made fourteen (14) or less days prior to the date of arrival will incur a 20% charge of the total stay, tax excluded; minimum charge of \$50.00.

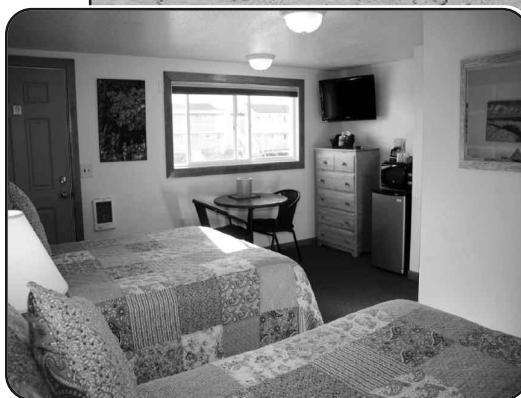
No refunds for early departures or no shows.

---

**RATE INFORMATION**

**\* All rates are for the number of guests stated, per night, unless otherwise noted with a weekly rate.**

**\* Extra persons are \$10 per person, per night, with no charge for children under the age of two.**



# TOP MAST RESORT CAPE COD

*A Distinctive Family Owned  
and Operated Resort*

*Located Directly On the Beach  
Overlooking Cape Cod Bay*

**2022**  
*Rates and Information*

**1-800-917-0024**

**www.topmastresort.com**

**vacation@topmastresort.com**

**P.O. Box 44 • 209 Shore Road  
North Truro, MA 02652**

Your Hosts:  
*Al, Nancy, Jason and Adrienne*

RATE SCHEDULE FOR 2022	Garden View Motel Room <i>(upstairs only)</i>  2 Queen Beds		Beachfront Motel Room <i>(upstairs only)</i>  1 Queen Bed & Sleep Sofa		Beachfront One Room Unit with Kitchen  2 Double Beds or 1 Queen Bed & Sleep Sofa		Beachfront Two Room Unit with Kitchen  1 Queen Bed & 1 Double Bed		Two Bedroom Cottage  2 Double Beds & Sleep Sofa		One Bedroom Beach House  2 Queen Beds & Sleep Sofa		Three Bedroom Beach House  5 Queen Beds		Four Bedroom Shore House  7 Queen Beds		
	Number of People → *Extra people are addt'l \$																
	rate for up to <b>2</b> persons* (sleeps up to 5 with cot)		rate for up to <b>2</b> persons* (sleeps up to 4 with couch)		rate for up to <b>2</b> persons* (sleeps up to 5 with cot)		rate for up to <b>4</b> persons* (sleeps up to 5 with cot)		rate for up to <b>4</b> persons* (sleeps up to 6 with cot)		rate for up to <b>4</b> persons* (sleeps up to 5 with couch)		rate for up to <b>6</b> persons* (sleeps up to 10)		rate for up to <b>8</b> persons* (sleeps up to 14)		
Rates are subject to State and Local Taxes 14.45%	Sun, Mon, Tues, Wed, Thurs	Fri, Sat	Sun, Mon, Tues, Wed, Thurs	Fri, Sat	Sun, Mon, Tues, Wed, Thurs	Fri, Sat	Sun, Mon, Tues, Wed, Thurs	Fri, Sat	Sun, Mon, Tues, Wed, Thurs	Fri, Sat	Sun, Mon, Tues, Wed, Thurs	Fri, Sat	Sun, Mon, Tues, Wed, Thurs	Fri, Sat	Sun, Mon, Tues, Wed, Thurs	Fri, Sat	
<b>May 5<sup>th</sup> - June 2<sup>nd</sup></b> <i>*Excluding Memorial Day</i>	\$70	\$100 2 nt min	\$90	\$120 2 nt min	\$100	\$130 2 nt min	\$140	\$180 2 nt min	\$130 2 nt min	\$170 2 nt min	\$250 2 nt min	\$330 2 nt min	\$270 2 nt min	\$350 2 nt min	\$290 2 nt min	\$410 2 nt min	
<b>June 3<sup>rd</sup> - June 16<sup>th</sup></b>	\$90	\$120 2 nt min	\$110	\$140 2 nt min	\$120	\$150 2 nt min	\$160	\$200 2 nt min	\$190 /nt, 2 nt min		\$2,400 /week only <i>Starting June 4<sup>th</sup></i>		\$3,500 /week only <i>Starting June 4<sup>th</sup></i>		\$420 2 nt min	\$540 2 nt min	
<b>June 17<sup>th</sup> - June 24<sup>th</sup></b>	\$100	\$140 2 nt min	\$160 /nt, 2 nt min		\$170 /nt, 2 nt min		\$230 /nt, 2 nt min		\$250 /nt, 2 nt min		\$2,600 /week only <i>Starting June 18<sup>th</sup></i>		\$3,700 /week only <i>Starting June 18<sup>th</sup></i>		\$440 2 nt min	\$560 2 nt min	
<b>June 25<sup>th</sup> - July 1<sup>st</sup></b>	\$190 /nt, 2 nt min		\$210 /nt, 2 nt min		Up: \$220 /nt, 2 nt min Down: \$1,540 /week only		Up: \$280 /nt, 2 nt min Down: \$1,960 /week only		\$2,100 /week only		\$4,500 /week only		\$5,600 /week only		\$5,500 /week only		
<b>July 2<sup>nd</sup> - Aug. 26<sup>th</sup></b> <i>Summer Season</i>	\$210 /nt, 2 nt min		\$230 /nt, 2 nt min		Up: \$240 /nt, 2 nt min Down: \$1,680 /week only		Up: \$300 /nt, 2 nt min Down: \$2,100 /week only		\$2,400 /week only		\$5,000 /week only		\$6,100 /week only		\$6,000 /week only		
<b>Aug. 27<sup>th</sup> - Sept. 4<sup>th</sup></b>	\$190 /nt, 2 nt min		\$210 /nt, 2 nt min		\$220 /nt, 2 nt min		\$280 /nt, 2 nt min		\$2,100 /week only		\$4,500 /week only <i>Ending Sept. 2<sup>nd</sup></i>		\$5,600 /week only <i>Ending Sept. 2<sup>nd</sup></i>		\$5,500 /week only <i>Ending Sept. 2<sup>nd</sup></i>		
<b>Sept. 5<sup>th</sup> - Sept. 17<sup>th</sup></b>	\$100	\$140 2 nt min	\$160 /nt, 2 nt min		\$170 /nt, 2 nt min		\$230 /nt, 2 nt min		\$250 /nt, 2 nt min		\$2,600 /week only <i>Starting Sept. 3<sup>rd</sup></i>		\$3,700 /week only <i>Starting Sept. 3<sup>rd</sup></i>		<i>Starting Sept. 3<sup>rd</sup></i> \$440 2 nt min		\$560 2 nt min
<b>Sept. 18<sup>th</sup> - Sept. 24<sup>th</sup></b>	\$90	\$120 2 nt min	\$110	\$140 2 nt min	\$120	\$150 2 nt min	\$160	\$200 2 nt min	\$190 /nt, 2 nt min		\$2,400 /week only <i>Starting Sept. 17<sup>th</sup></i>		\$3,500 /week only <i>Starting Sept. 17<sup>th</sup></i>		\$420 2 nt min	\$540 2 nt min	
<b>Sept. 25<sup>th</sup> - Oct. 22<sup>nd</sup></b> <i>Closed Oct. 23<sup>rd</sup></i>	\$70	\$100 2 nt min	\$90	\$120 2 nt min	\$100	\$130 2 nt min	\$140	\$180 2 nt min	\$130 2 nt min	\$170 2 nt min	\$250 2 nt min	\$330 2 nt min	\$270 2 nt min	\$350 2 nt min	\$290 2 nt min	\$410 2 nt min	