

Resort Policies:

A \$500 Deposit is required to secure each week's reservation. A \$1,000 Deposit for house rentals.

A \$80-\$450 Deposit is required to secure daily reservations, depending on length of stay.

Check-In Time: **2:00 p.m.** or later
3:00 p.m. or later for Saturday arrivals in July and August.

Check-Out Time: **10:00 a.m.**

Rates are subject to change without notice.

No reservation is definite unless confirmed.

Sorry, no pets or emotional support animals allowed.

Occupancy may not exceed registered/paid guests.

All Rooms, Deck Areas, Picnic Table Areas and Pool Areas are NON-SMOKING

We accept Cash, Visa, MasterCard, Discover, AmEx

Cancellation Policy:

Cancellations made fifteen (15) or more days prior to the date of arrival will incur a 10% charge of the total stay, tax excluded; minimum charge of \$50.00.

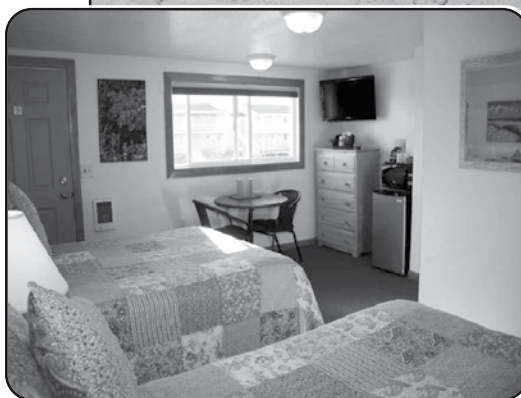
Cancellations made fourteen (14) or less days prior to the date of arrival will incur a 20% charge of the total stay, tax excluded; minimum charge of \$50.00.

No refunds for early departures or no shows.

RATE INFORMATION

*** All rates are for the number of guests stated, per night, unless otherwise noted with a weekly rate.**

*** Extra persons are \$10 per person, per night, with no charge for children under the age of two.**



TOP MAST RESORT CAPE COD

*A Distinctive Family Owned
and Operated Resort*

*Located Directly On the Beach
Overlooking Cape Cod Bay*

*2023
Rates and Information*

1-800-917-0024

www.topmastresort.com

vacation@topmastresort.com

**P.O. Box 44 • 209 Shore Road
North Truro, MA 02652**

Your Hosts:
Al, Nancy, Jason and Adrienne

| RATE SCHEDULE FOR 2023 | Garden View Motel Room <i>(upstairs only)</i> 2 Queen Beds | | Beachfront Motel Room <i>(upstairs only)</i> 1 Queen Bed & Sleep Sofa | | Beachfront One Room Unit with Kitchen 2 Double Beds or 1 Queen Bed & Sleep Sofa | | Beachfront Two Room Unit with Kitchen 1 Queen Bed & 1 Double Bed | | Two Bedroom Cottage 2 Double Beds & Sleep Sofa | | One Bedroom Beach House 2 Queen Beds & Sleep Sofa | | Three Bedroom Beach House 5 Queen Beds | | Four Bedroom Shore House 7 Queen Beds | |
|--|---|-------------------|---|-------------------|---|-------------------|--|-------------------|--|----------|---|----------|---|----------|--|----------|
| | Number of People → *Extra people are add'l \$ | | | | | | | | | | | | | | | |
| | rate for up to 2 persons* (sleeps up to 5 with cot) | | rate for up to 2 persons* (sleeps up to 4 with couch) | | rate for up to 2 persons* (sleeps up to 5 with cot) | | rate for up to 4 persons* (sleeps up to 5 with cot) | | rate for up to 4 persons* (sleeps up to 6 with cot) | | rate for up to 4 persons* (sleeps up to 5 with couch) | | rate for up to 6 persons* (sleeps up to 10) | | rate for up to 8 persons* (sleeps up to 14) | |
| Rates are subject to State and Local Taxes 14.45% | Sun, Mon, Tues, Wed, Thurs | Fri, Sat | Sun, Mon, Tues, Wed, Thurs | Fri, Sat | Sun, Mon, Tues, Wed, Thurs | Fri, Sat | Sun, Mon, Tues, Wed, Thurs | Fri, Sat | Sun, Mon, Tues, Wed, Thurs | Fri, Sat | Sun, Mon, Tues, Wed, Thurs | Fri, Sat | Sun, Mon, Tues, Wed, Thurs | Fri, Sat | Sun, Mon, Tues, Wed, Thurs | Fri, Sat |
| May 4th - June 1st <i>*Excluding May 27, 28, 29</i> | \$80 | \$110 2 nt min | \$100 | \$130 2 nt min | \$110 | \$140 2 nt min | \$150 | \$190 2 nt min | \$140 | \$180 | \$260 | \$340 | \$280 | \$360 | \$300 | \$420 |
| | | | | | | | | | 2 nt min | | 3 nt min | | 3 nt min | | 3 nt min | |
| June 2nd - June 15th | \$100 | \$130 2 nt min | \$120 | \$150 2 nt min | \$130 | \$160 2 nt min | \$170 | \$210 2 nt min | \$200 /nt, 2 nt min | | \$2,500 /week only <i>Starting June 3rd</i> | | \$3,600 /week only <i>Starting June 3rd</i> | | \$430 | \$550 |
| | | | | | | | | | | | | | 3 nt min | | | |
| June 16th - June 23rd | \$120 | \$160 2 nt min | \$180 /nt, 2 nt min | | \$190 /nt, 2 nt min | | \$250 /nt, 2 nt min | | \$270 /nt, 2 nt min | | \$2,700 /week only <i>Starting June 17th</i> | | \$3,800 /week only <i>Starting June 17th</i> | | \$460 | \$580 |
| | | | | | | | | | | | | | 3 nt min | | | |
| June 24th - June 30th | \$200 /nt, 2 nt min | | \$220 /nt, 2 nt min | | Up: \$230 /nt, 2 nt min Down: \$1,610 /week only | | Up: \$290 /nt, 2 nt min Down: \$2,030 /week only | | \$2,200 /week only | | \$4,600 /week only | | \$5,700 /week only | | \$5,600 /week only | |
| July 1st - Aug. 25th <i>Summer Season</i> | \$220 /nt, 2 nt min | | \$240 /nt, 2 nt min | | Up: \$250 /nt, 2 nt min Down: \$1,750 /week only | | Up: \$310 /nt, 2 nt min Down: \$2,170 /week only | | \$2,500 /week only | | \$5,100 /week only | | \$6,200 /week only | | \$6,100 /week only | |
| Aug. 26th - Sept. 3rd | \$200 /nt, 2 nt min | | \$220 /nt, 2 nt min | | \$230 /nt, 2 nt min | | \$290 /nt, 2 nt min | | \$2,200 /week only | | \$4,600 /week only <i>Ending Sept. 1st</i> | | \$5,700 /week only <i>Ending Sept. 1st</i> | | \$5,600 /week only <i>Ending Sept. 1st</i> | |
| Sept. 4th - Sept. 16th | \$120 | \$160 2 nt min | \$180 /nt, 2 nt min | | \$190 /nt, 2 nt min | | \$250 /nt, 2 nt min | | \$270 /nt, 2 nt min | | \$2,700 /week only <i>Starting Sept. 2nd</i> | | \$3,800 /week only <i>Starting Sept. 2nd</i> | | <i>Starting Sept. 2nd</i> \$460 \$580 | |
| | | | | | | | | | | | | | | | 3 nt min | |
| Sept. 17th - Sept. 23rd | \$100 | \$130 2 nt min | \$120 | \$150 2 nt min | \$130 | \$160 2 nt min | \$170 | \$210 2 nt min | \$200 /nt, 2 nt min | | \$2,500 /week only <i>Starting Sept. 16th</i> | | \$3,600 /week only <i>Starting Sept. 16th</i> | | \$430 | \$550 |
| | | | | | | | | | | | | | | | 3 nt min | |
| Sept. 24th - Oct. 21st <i>*Excluding Oct. 6, 7, 8 Closed Oct. 22nd</i> | \$80 | \$110 2 nt min | \$100 | \$130 2 nt min | \$110 | \$140 2 nt min | \$150 | \$190 2 nt min | \$140 | \$180 | \$260 | \$340 | \$280 | \$360 | \$300 | \$420 |
| | | | | | | | | | 2 nt min | | 3 nt min | | 3 nt min | | 3 nt min | |