

Resort Policies:

A \$500 Deposit is required to secure each week's reservation. A \$1,000 Deposit for house rentals.

A \$80-\$450 Deposit is required to secure daily reservations, depending on length of stay.

Check-In Time: **2:00 p.m.** or later
3:00 p.m. or later for Saturday arrivals in July and August.

Check-Out Time: **10:00 a.m.**

Rates are subject to change without notice.

No reservation is definite unless confirmed.

Sorry, no pets or emotional support animals allowed.

Occupancy may not exceed registered/paid guests.

All Rooms, Deck Areas, Picnic Table Areas and Pool Areas are NON-SMOKING

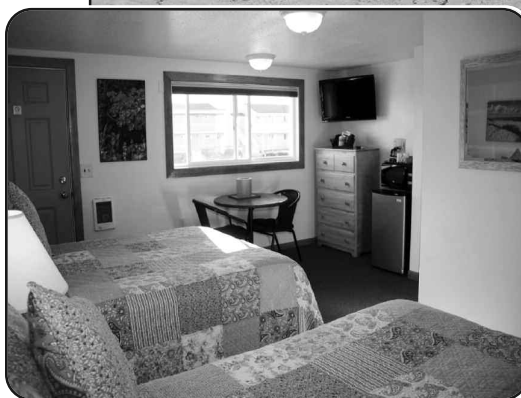
We accept Cash, Visa, MasterCard, Discover, AmEx

Cancellation Policy:

Cancellations made fifteen (15) or more days prior to the date of arrival will incur a 10% charge of the total stay, tax excluded; minimum charge of \$50.00.

Cancellations made fourteen (14) or less days prior to the date of arrival will incur a 20% charge of the total stay, tax excluded; minimum charge of \$50.00.

No refunds for early departures or no shows.



TOP MAST RESORT CAPE COD

*A Distinctive Family Owned
and Operated Resort*

*Located Directly On the Beach
Overlooking Cape Cod Bay*

*2022
Rates and Information*

1-800-917-0024

www.topmastresort.com

vacation@topmastresort.com

**P.O. Box 44 • 209 Shore Road
North Truro, MA 02652**

RATE INFORMATION

*** All rates are for the number of guests stated, per night, unless otherwise noted with a weekly rate.**

*** Extra persons are \$10 per person, per night, with no charge for children under the age of two.**

Your Hosts:

Al, Nancy, Jason and Adrienne

RATE SCHEDULE FOR 2022	Garden View Motel Room <i>(upstairs only)</i> 2 Queen Beds		Beachfront Motel Room <i>(upstairs only)</i> 1 Queen Bed & Sleep Sofa		Beachfront One Room Unit with Kitchen 2 Double Beds or 1 Queen Bed & Sleep Sofa		Beachfront Two Room Unit with Kitchen 1 Queen Bed & 1 Double Bed		Two Bedroom Cottage 2 Double Beds & Sleep Sofa		One Bedroom Beach House 2 Queen Beds & Sleep Sofa		Three Bedroom Beach House 5 Queen Beds		Four Bedroom Shore House 7 Queen Beds	
	Number of People → *Extra people are add'l \$															
Rates are subject to State and Local Taxes 14.45%																
Sun, Mon, Tues, Wed, Thurs																
Fri, Sat																
Sun, Mon, Tues, Wed, Thurs																
Fri, Sat																
May 5 th - June 2 nd <i>*Excluding May 27, 28, 29</i>	\$70	\$100 2 nt min	\$90	\$120 2 nt min	\$100	\$130 2 nt min	\$140	\$180 2 nt min	\$130 2 nt min	\$170 2 nt min	\$250 3 nt min	\$330 3 nt min	\$270 3 nt min	\$350 3 nt min	\$290 3 nt min	\$410 3 nt min
June 3 rd - June 16 th	\$90	\$120 2 nt min	\$110	\$140 2 nt min	\$120	\$150 2 nt min	\$160	\$200 2 nt min	\$190 /nt, 2 nt min		\$2,400 /week only <i>Starting June 4th</i>		\$3,500 /week only <i>Starting June 4th</i>		\$420 3 nt min	\$540 3 nt min
June 17 th - June 24 th	\$100	\$140 2 nt min	\$160 /nt, 2 nt min		\$170 /nt, 2 nt min		\$230 /nt, 2 nt min		\$250 /nt, 2 nt min		\$2,600 /week only <i>Starting June 18th</i>		\$3,700 /week only <i>Starting June 18th</i>		\$440 3 nt min	\$560 3 nt min
June 25 th - July 1 st	\$190 /nt, 2 nt min		\$210 /nt, 2 nt min		Up: \$220 /nt, 2 nt min Down: \$1,540 /week only		Up: \$280 /nt, 2 nt min Down: \$1,960 /week only		\$2,100 /week only		\$4,500 /week only		\$5,600 /week only		\$5,500 /week only	
July 2 nd - Aug. 26 th <i>Summer Season</i>	\$210 /nt, 2 nt min		\$230 /nt, 2 nt min		Up: \$240 /nt, 2 nt min Down: \$1,680 /week only		Up: \$300 /nt, 2 nt min Down: \$2,100 /week only		\$2,400 /week only		\$5,000 /week only		\$6,100 /week only		\$6,000 /week only	
Aug. 27 th - Sept. 4 th	\$190 /nt, 2 nt min		\$210 /nt, 2 nt min		\$220 /nt, 2 nt min		\$280 /nt, 2 nt min		\$2,100 /week only		\$4,500 /week only <i>Ending Sept. 2nd</i>		\$5,600 /week only <i>Ending Sept. 2nd</i>		\$5,500 /week only <i>Ending Sept. 2nd</i>	
Sept. 5 th - Sept. 17 th	\$100	\$140 2 nt min	\$160 /nt, 2 nt min		\$170 /nt, 2 nt min		\$230 /nt, 2 nt min		\$250 /nt, 2 nt min		\$2,600 /week only <i>Starting Sept. 3rd</i>		\$3,700 /week only <i>Starting Sept. 3rd</i>		<i>Starting Sept. 3rd</i>	
														\$440 3 nt min	\$560 3 nt min	
Sept. 18 th - Sept. 24 th	\$90	\$120 2 nt min	\$110	\$140 2 nt min	\$120	\$150 2 nt min	\$160	\$200 2 nt min	\$190 /nt, 2 nt min		\$2,400 /week only <i>Starting Sept. 17th</i>		\$3,500 /week only <i>Starting Sept. 17th</i>		\$420 3 nt min	\$540 3 nt min
Sept. 25 th - Oct. 22 nd <i>*Excluding Oct. 7, 8, 9 Closed Oct. 23rd</i>	\$70	\$100 2 nt min	\$90	\$120 2 nt min	\$100	\$130 2 nt min	\$140	\$180 2 nt min	\$130 2 nt min	\$170 2 nt min	\$250 3 nt min	\$330 3 nt min	\$270 3 nt min	\$350 3 nt min	\$290 3 nt min	\$410 3 nt min